

# What is an Educational Psychologist?

## Information for Parents/Carers



- Educational Psychologists (EPs) work with children and young people aged 0–25 to help them learn, develop, and thrive in their education.
- We focus on understanding how a child thinks, learns, communicates, and manages emotions, and we work closely with families, carers, schools, and other professionals to find ways to support them.

### What we do:

- Work with children to understand how they learn and feel.
- Look at their learning needs, sometimes using assessments.
- Give practical strategies to support learning and well-being.
- Contribute to Education Health and Care Needs Assessments
- Work together with families and schools.



### What we don't do:



- We don't diagnose medical or mental health conditions
- We don't provide ongoing therapy
- We don't make decisions about funding or school placements
- We don't complete assessments without consent.

### Will I need to prepare anything before I speak with the EP?

You don't need to prepare anything before speaking with an EP. However, some questions you might want to think about may include:

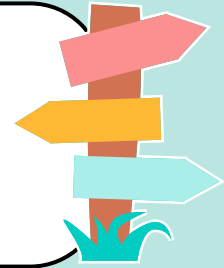
- What are your child's strengths?
- What motivates your child?
- What are your child's needs?
- What would you like to see them achieve?
- What is working well for your child?
- What support do you think your child needs?



# What does the process look like?

## 1. Referral

- The school or setting make a request for EP involvement, with your knowledge.
- Or EP involvement may be part of the Education, Health and Care Needs assessment process (further information on this can be found [here](#))



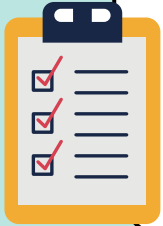
## 2. Consent

You will receive a consent form to complete.

We will only work with your child once you have given informed consent.

This means you understand:

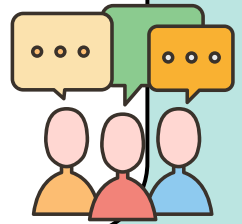
- Why EP involvement has been requested
- What will happen
- How information will be used



## 3. Involvement/Assessment

An EP may do the following:

- Observations
- Talk or play with your child
- Look at schoolwork
- Problem-solve together with staff
- Use assessment tools where helpful
- Gather the views of you, your child and school staff



## 4. Report

The EP will write a report following their involvement which will be shared with you and the school/setting.

This may include:

- A summary of their assessment
- A Psychological Formulation (pulling together what's going on for your child, why and how we can best support them)
- A description of your child's strengths and areas of need
- Outcomes for your child
- Provision and strategies



If you have any questions, please contact your school's SENCo or your linked Educational Psychologist directly.

Want to chat with other parents/carers?

Stoke-on-Trent Parent Engagement group (PEGIS) may be able to help.

Further information can be found [here](#).